

# **Hy-Lok** BLF Series

## Forged Bellows Valves

Catalog No. H-BL200  
Apr, 2006



### Design & Engineering

- Forged body bellows valves
- Maximum working pressure is up to 145 psig (10 bar)
- Temperature rating is up to 200°F (93°C)
- Tube & pipe butt weld, Hy-Lok tube fitting, and Flange ends
- 100% helium leak tested

### Application

- Semiconductor
- Biotech
- Pharmaceutical



**HY-LOK CORPORATION**

©2006 HY-LOK CORPORATION All rights reserved

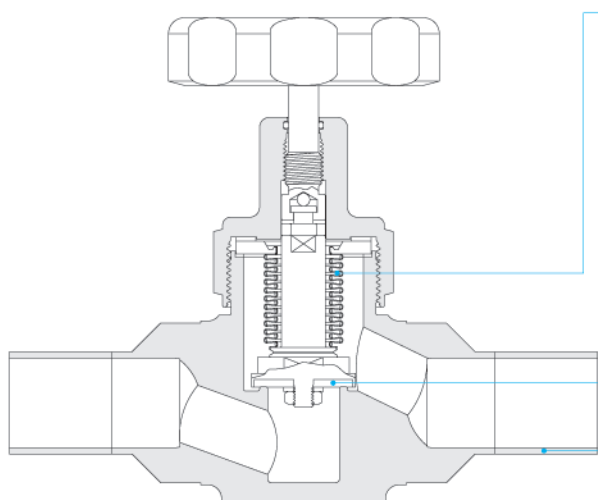


ISO 14001

OHSAS 18001

## Features

- Forged body reduced the total weight.
- Choice of Butt weld, Hy-Lok tube fitting and Flange Type.
- Easily Purged to maintain clean operation.
- Bottom mounting standard.
- 100% helium leak tested.



- Precision formed metal bellows for long cycle life.
- Replaceable subassembly for easy maintenance.
- PCTFE stem tip standard for leak-tight, repetitive shutoff.
- Nonrotating stem tip for long cycle life.
- Variable end connections  
- Include butt welds, Hy-Lok tube fittings and flanges.

## Materials

No.	Description	Material / ASTM Specification
1	Body	Single Vacuum Melt 316L / A479
2	Bellows	Type 321 / A269
3	Stem Tip	PCTFE
4	Gasket	PCTFE
5	Bonnet	Type 316 / A479
6	Handle	Aluminum

## Specification

Series	Orifice in. (mm)	Cv	Pressure Rating psig (bar)	Temp. Rating °F (°C)
BLFV1	0.472(12.0)	2.6	Round Handle : 145 (10)	-20 ~ 200 (-28 ~ 93)
BLFV2	0.59(15.0)	2.9	Normally Open : 145 (10)	
BLFV3	0.787(20.0)	4.8	Normally Close : 125 (8.6)	

## Internal Surface Grade

Grade	Designator	Roughness Average Ra. (E.P)	Packing Standard Class 10
B.A.	B	0.25 $\mu$ m (10 $\mu$ in)	Double
High	H	0.13 $\mu$ m ( 5 $\mu$ in)	

- Grade "B.A." is standard.

## Cleaning & Testing

Passivation is done at Nitrogen environment. Fine cleaning is one by Ultrasonic cleansing with resistivity over 18M $\Omega$  D.I water after finishing the passivation. Inboard helium leak tested to a rate of  $4 \times 10^{-9}$ cm<sup>3</sup>/s.

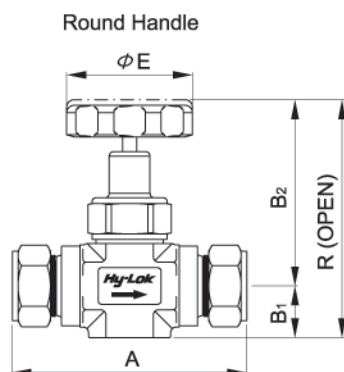
## Assembly & Packaging

Assembly and Packaging is performed in the clean room of Class 10. Valves are packed with anti-static polyethylene bag that is pressured into the high purity nitrogen gas.

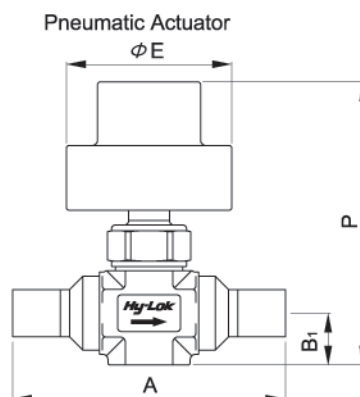
## Dimensions

All Dimensions are in millimeters, except for the O.D size.

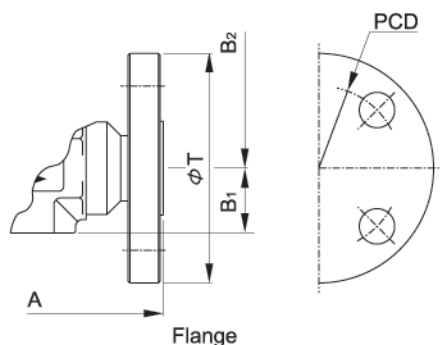
In case of the end connection for Hy-Lok tube fitting, dimensions shown with Hy-Lok nuts in finger-tight position, where applicable.



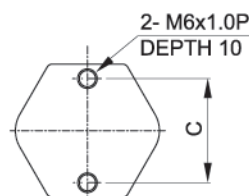
Hy-Lok tube Fitting



Butt Weld



Flange



Bottom Mounting

End Connection		Ordering No.	Orifice	A	B <sub>1</sub>	B <sub>2</sub>	C	D	E	P	R	T	PCD
Type	Size												
Hy-Lok Tube Fitting	3/4"	BLFV1H-12	12.0	100.2	24.0	99.0	30.0	60.0	60.0	160.0	123.0	-	-
	1"	BLFV2H-16	15.0	126.7	28.0	101.5	35.0	70.0	100.0	210.0	129.5	-	-
	1"	BLFV3H-16	20.0	154.8	33.0	124.5	40.0	80.0	100.0	220.0	157.5	-	-
	1 1/4"	BLFV3H-20	20.0	173.8	33.0	124.5	40.0	80.0	100.0	220.0	157.5	-	-
Pipe Butt Weld	1/2"	BLFV1BW-15A	12.0	190.0	24.0	99.0	30.0	60.0	60.0	160.0	123.0	-	-
	3/4"	BLFV2BW-20A	15.0	200.0	28.0	101.5	35.0	70.0	100.0	210.0	129.5	-	-
	1"	BLFV3BW-25A	20.0	210.0	33.0	124.5	40.0	80.0	100.0	220.0	157.5	-	-
* FLANGE	1/2"	BLFV1RF10K-15A	12.0	108.0	24.0	99.0	30.0	60.0	60.0	160.0	123.0	95.0	70.0
	3/4"	BLFV2RF10K-20A	15.0	117.0	28.0	101.5	35.0	70.0	100.0	210.0	129.5	100.0	75.0
	1"	BLFV3RF10K-25A	20.0	127.0	33.0	124.5	40.0	80.0	100.0	220.0	157.5	125.0	90.0

\* JIS flange is standard. ANSI flange as an option. For the ordering number of the ANSI flange, refer to the ordering information (Page 4).

## Maintenance Kits

### Stem Tip Kits



Ordering number is the following.

Series	Orifice	Ordering No.
BLFV1	12.0mm	BLFV1STA-PCTFE
BLFV2	15.0mm	BLFV2STA-PCTFE

### Bellows Welded Kits (Bellows, lower stem and weld ring)



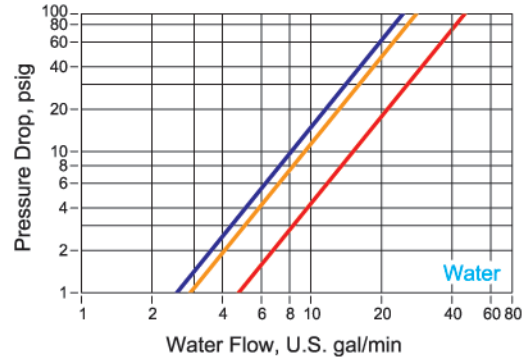
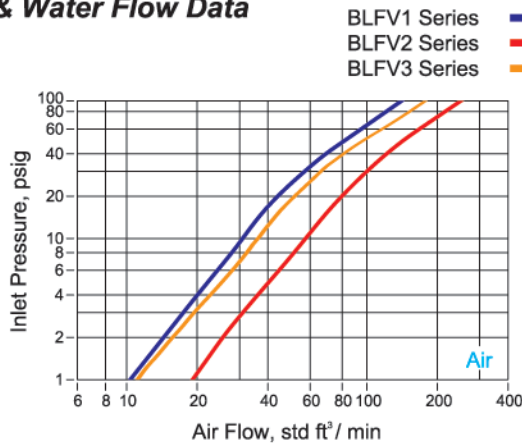
Ordering number is the following.

Series	Orifice	Ordering No.
BLFV1	12.0mm	BLFV1-BELS
BLFV2	15.0mm	BLFV2-BELS
* BLFV3	20.0mm	BLFV3-BELS

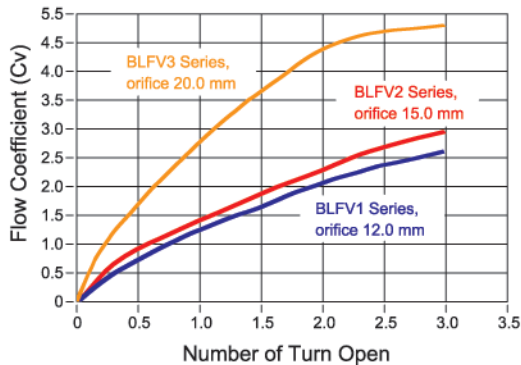
\* Kits include bellows, lower stem, weld ring and stem tip.

## Flow Data at 70°F (20°C)

### Air & Water Flow Data

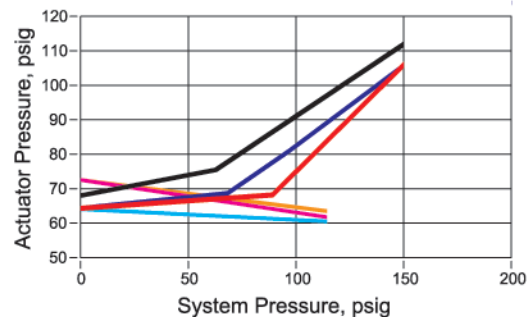


### Round Handle Flow Coefficient at Turns Open



### Pneumatic Actuator Performance

BLFV1 Series — Normally Open — Normally Close  
BLFV2 Series — Normally Open — Normally Close  
BLFV3 Series — Normally Open — Normally Close



## Ordering Information

**BLFV2**

**BW**

**16**

**PO**

**H**

**SM6L**

#### Series Designator by Orifice Size

- BLFV1 - orifice 12.0 mm
- BLFV2 - orifice 15.0 mm
- BLFV3 - orifice 20.0 mm

#### End Connection Designator

- H - Hy-Lok Tube Fitting
- BW - Butt Weld
- RF10K - JIS Flange RF 10kg/cm<sup>2</sup>
- RF150 - ANSI Flange RF 150 Class

#### Size Designator

#### Surface Grade Designator

- Nil - Grade "B.A"
- H - Grade "High"

#### Body Material Designator

- SM6L - Single Vacuum Melt 316L ASTM A479

#### Pipe Size

Nom. Pipe Size	1/2"	3/4"	1"
Designation	15A	20A	25A

#### Tube Size

Tude O.D	3/4"	1"	1 1/4"
Designation	12	16	20

#### Pneumatic Actuator Designator

- Nil - Round Handle
- PO - Pneumatic Actuator (Normally Open)
- PC - Pneumatic Actuator (Normally Close)

### ■ QUALITY SYSTEM CERTIFICATES



ISO 9001  
CERTIFICATE NO.GQC 212

ASME SECT III (MO)  
CERTIFICATE NO. QSC 584

### ■ TYPE APPROVALS (for Hy-Lok Tube Fittings)



American Bureau Shipping  
CERTIFICATE NO.00-BK50288-X



Lloyd's Register  
CERTIFICATE NO.01/10075



GERMANISCHER LLOYD  
CERTIFICATE NO.57798-91 HH



DET NORSKE VERITAS  
CERTIFICATE NO.P-9100

### SAFETY in VALVE SELECTION

Proper installation, material compatibility, operation and maintenance of these valves are the responsibility of the user. The total system design must be taken into consideration to ensure optimal performance and safety.



Distributed by :

www.hy-lok.com